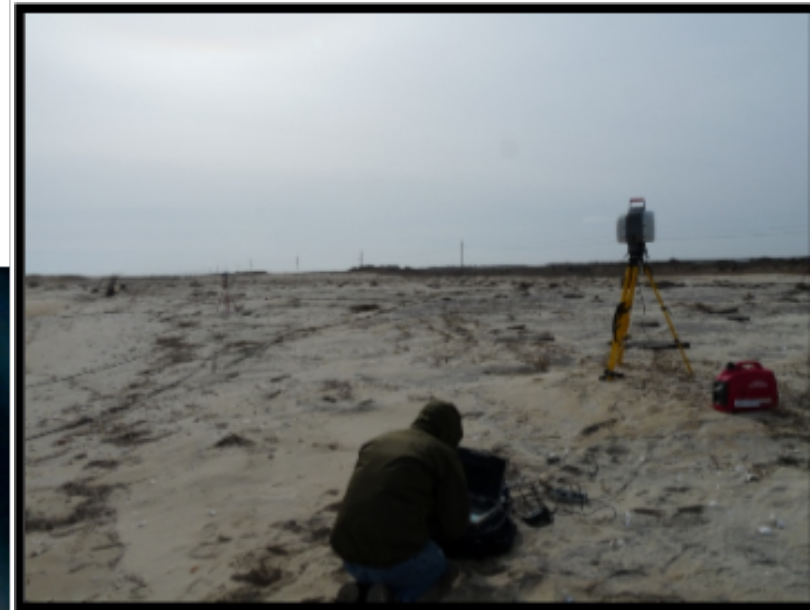
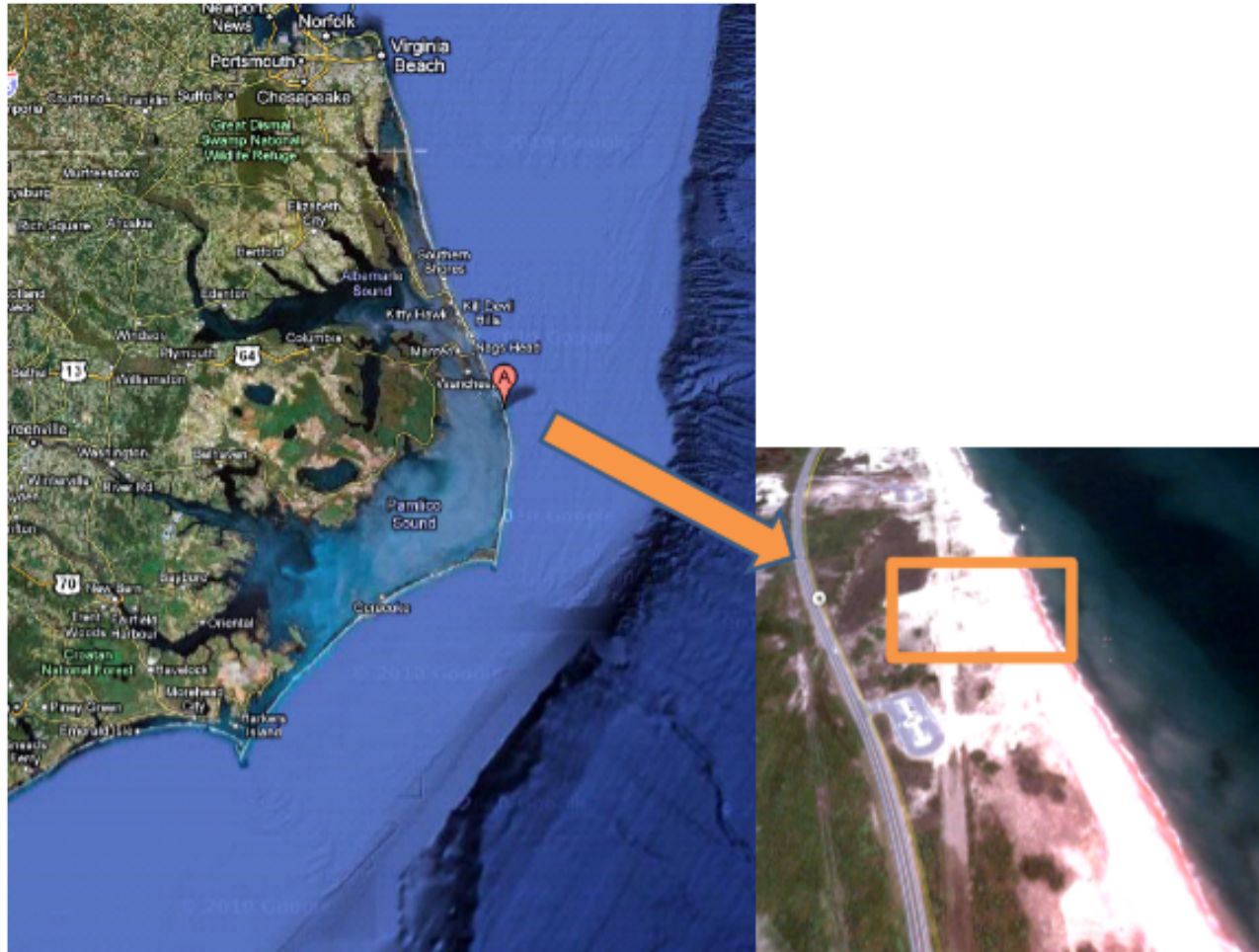


Using Terrestrial Laser Scanning to
Detect Changes on an Overwash Fan.
Pea Island, Outer Banks, North Carolina,
2007 to 2010.

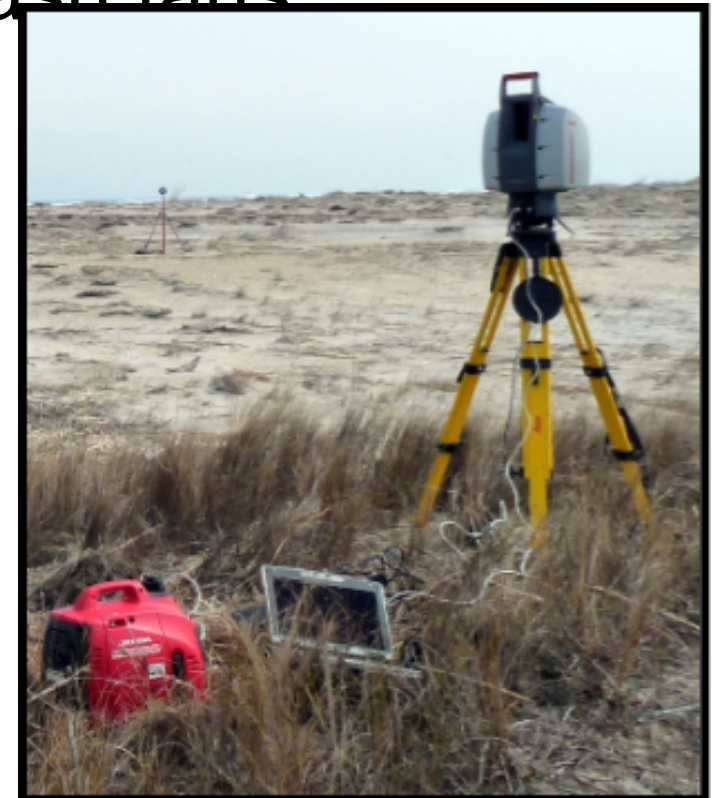
Thad Wester
Costal GIS
May, 2010

Study Site

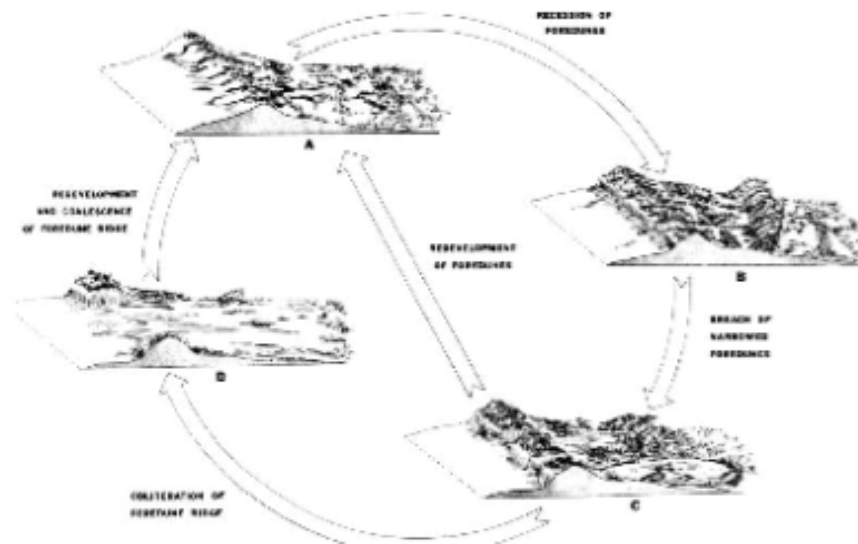


Data Collection

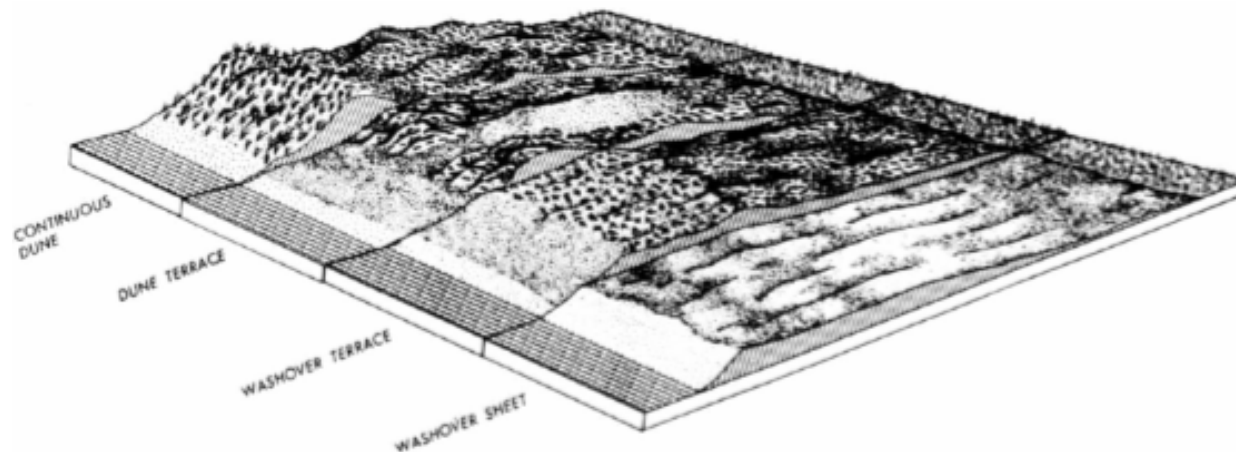
- Two Surveys. November, 2007 and February 2010
- Produced two 5 cm DTM.
- Problems with scanning overwash fans
 - Laser attenuation
 - Repeat scan monu



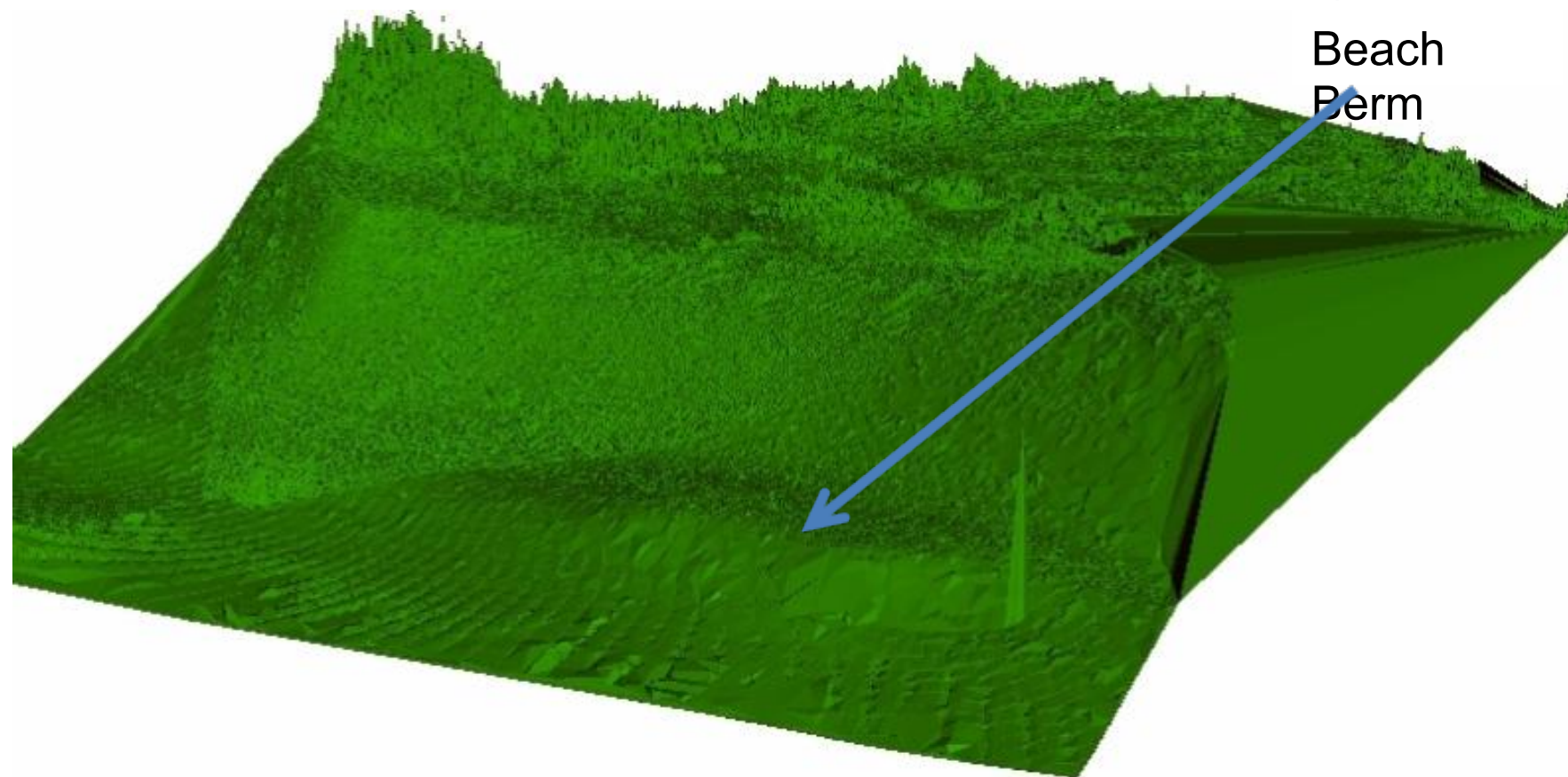
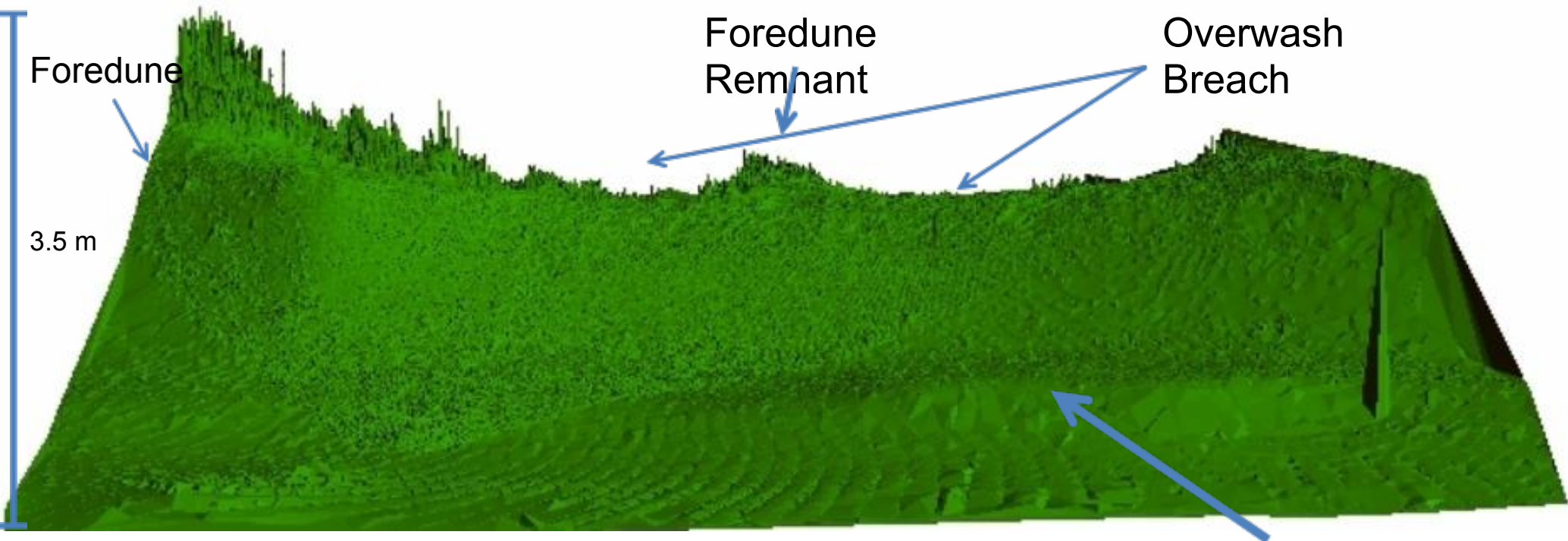
Stages of Barrier Island Movement

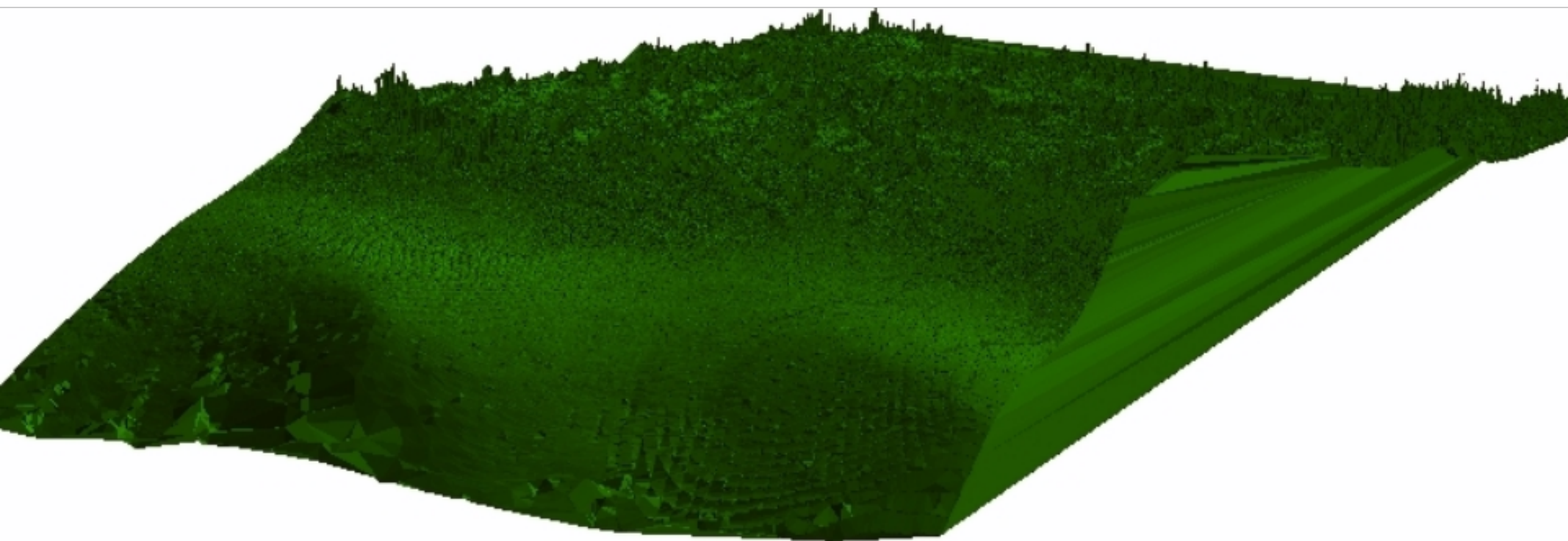
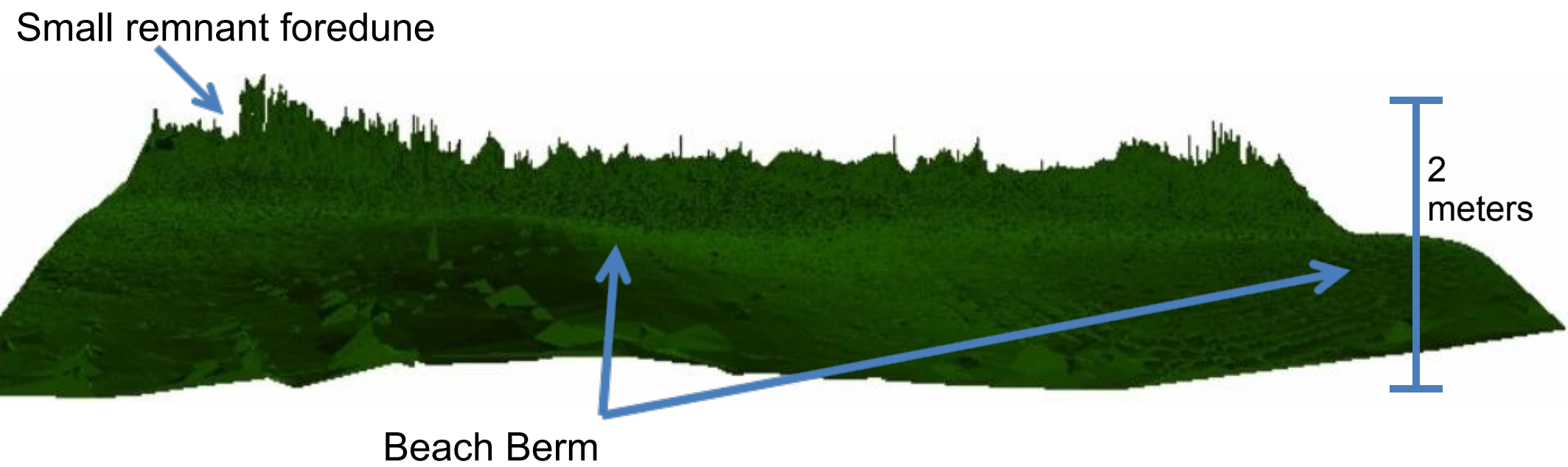


Hosier and Cleary, 1977

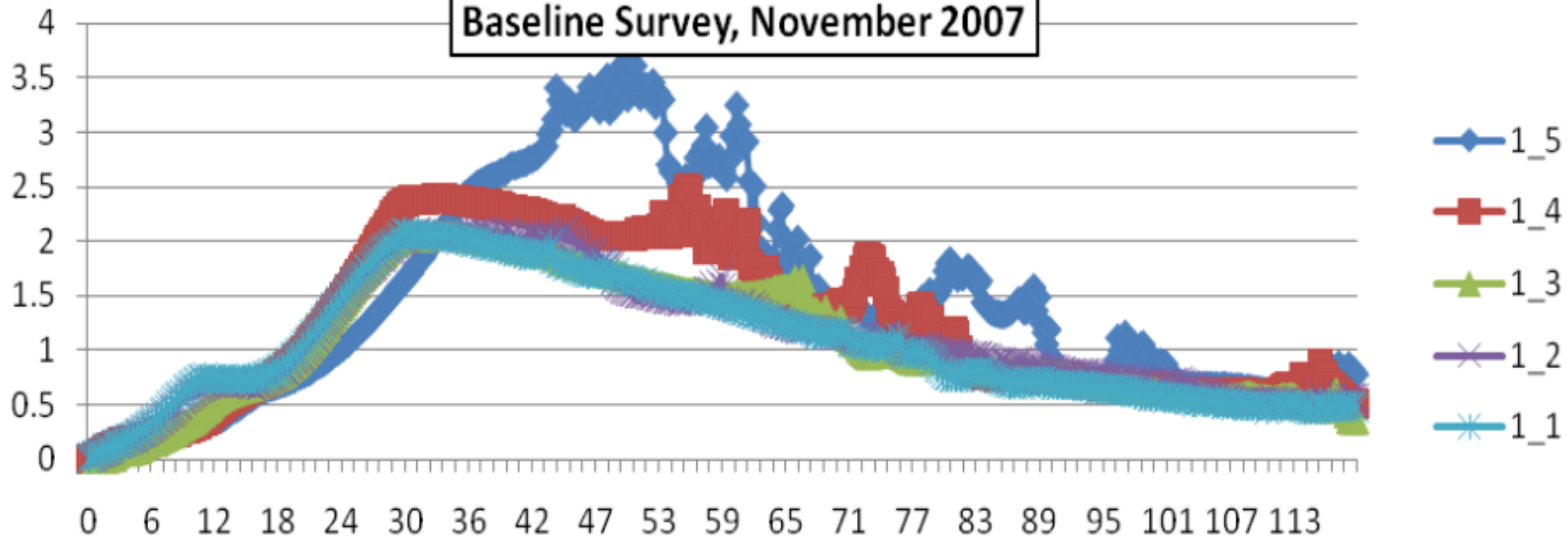


Ritchie and Penland, 1987

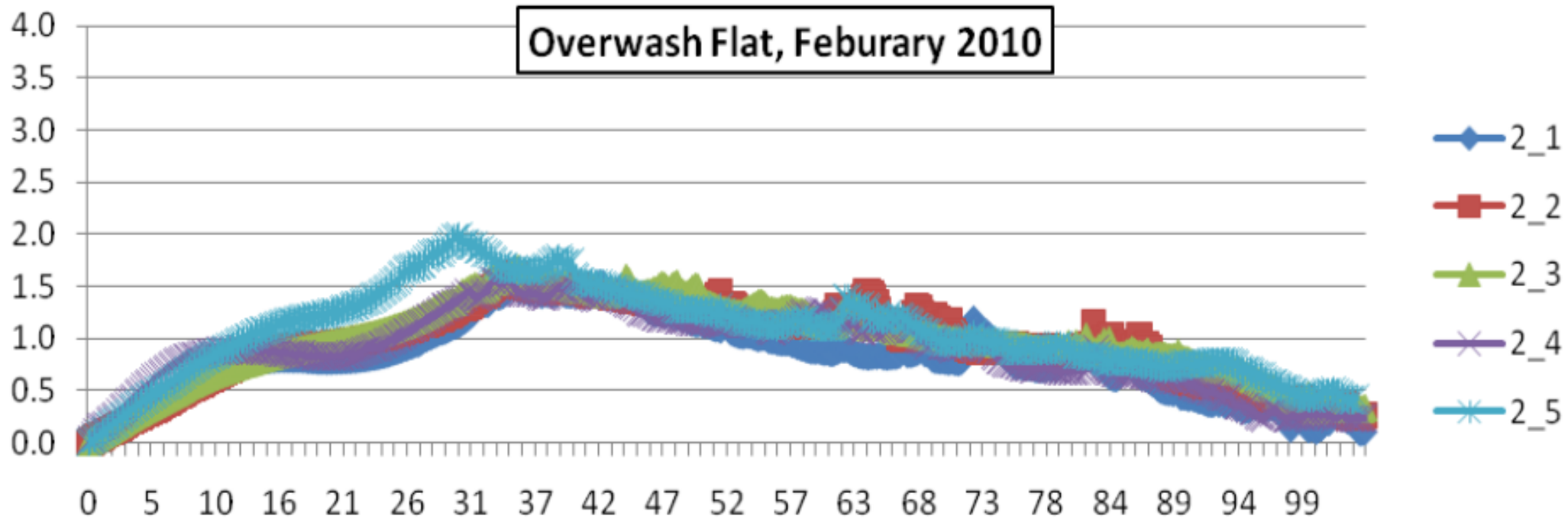




Baseline Survey, November 2007



Overwash Flat, February 2010



Hummocked Topography (embryonic dunes)

